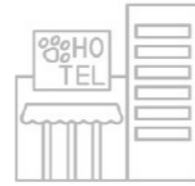




RETAIL & F&B CONCEPTS



MIXED USE



HOTEL



RESIDENTIAL



CULTURAL & TRANSPORTATION

B

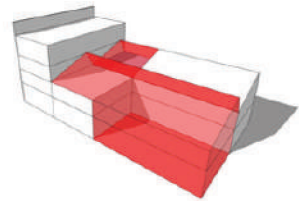
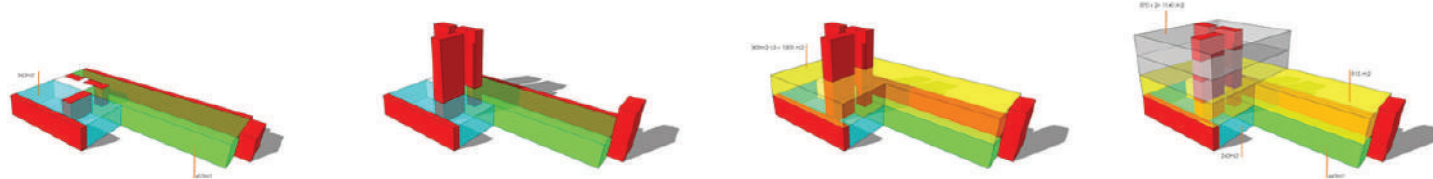


Miguel Yuste 33 MY33

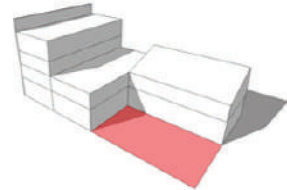
Location: Madrid, Spain
 Typology: Oficinas
 Design: White Lab studio
 Status : Constructed



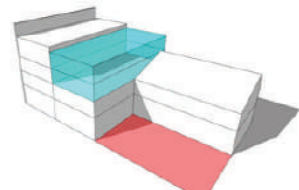
Oficinas Miguel Yuste **MY33**



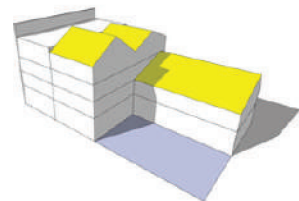
Se eliminan 4 crujeas de las una de las naves, y dos crujeas de la cubierta contigua.



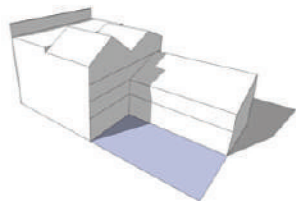
En total se sustraen dos plantas de 290,7m2



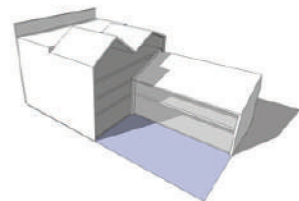
Se añaden dos plantas de 113,99m2



Se opta por continuar con el sistema de cerchas de las antiguas crujeas en la nueva cubierta.



Se estudia la orientación y las aperturas de la fachada para la iluminación natural.



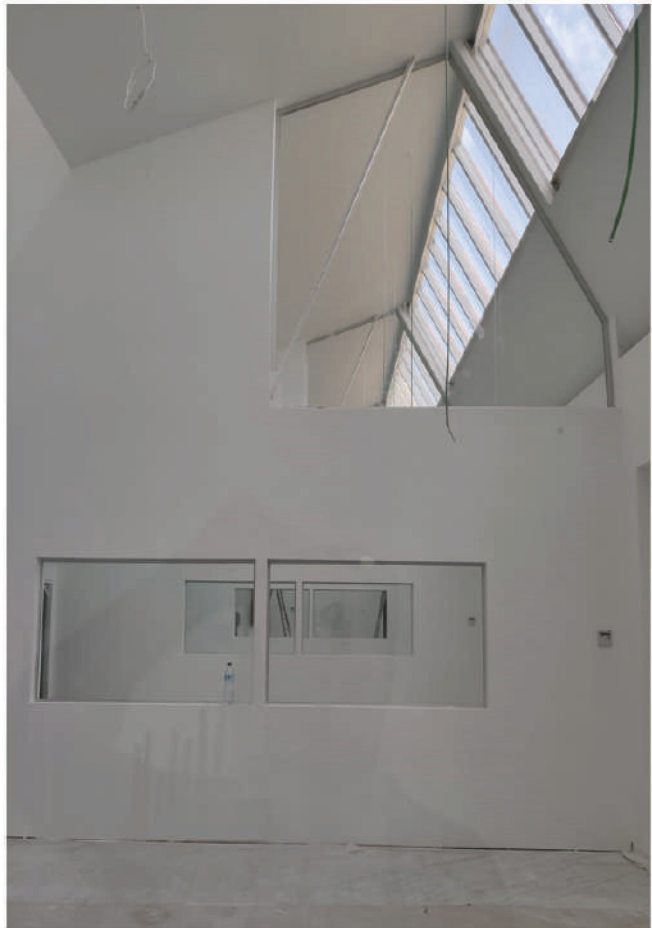
Se decide abrir las fachadas hacia el sur y a la luz, dando una imagen que alie el uso industrial y el de oficinas.





**Miguel
Yuste 33
MY33**

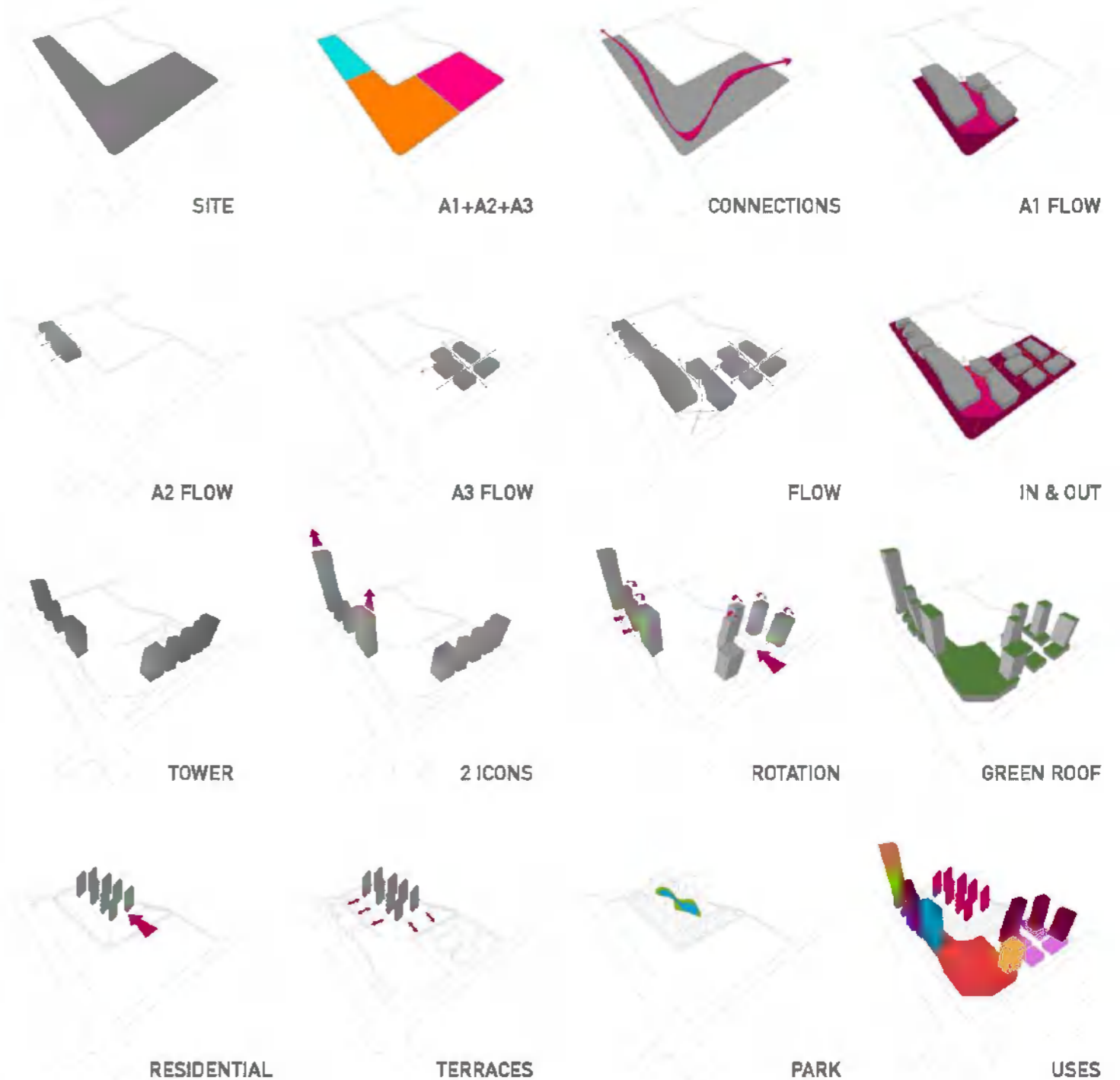
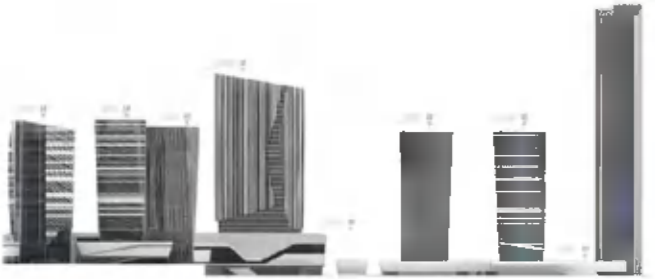
Location: Madrid, Spain
Typology: Oficinas
Design: White Lab studio
Status : Constructed





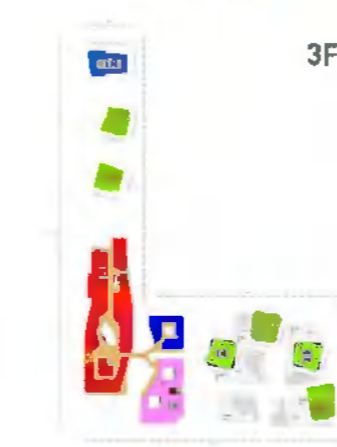
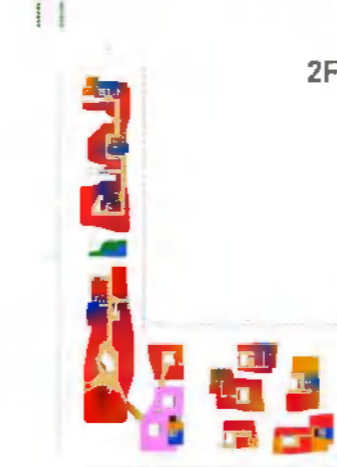
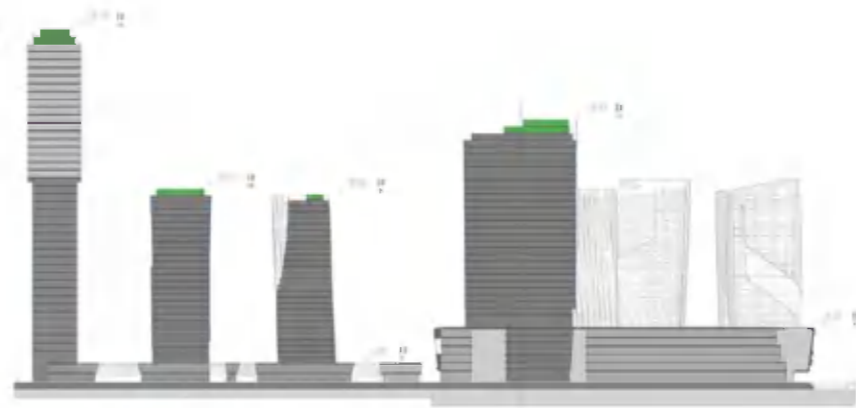
**Yichang
Parsons
Mixed use**

Location: Guizhou, China. 位置: 宜昌市, 中国
 Typology: Museum. 项目种类: 综合体
 Design: Heqiao Design. 设计师: Heqiao Design
 Status: Competition. 项目状态: 建筑设计大赛.





**Yichang
Parsons
Mixed use**



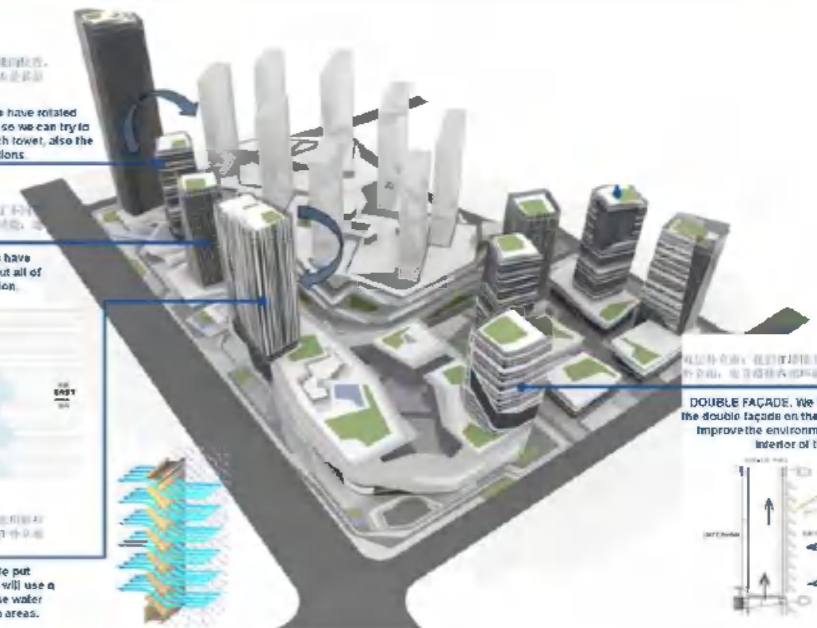
MAXIMIZE THE VIEWS. We have rotated the position of the towers so we can try to find the best views for each tower, also the best environmental conditions.

MAXIMIZE THE VIEWS. We have rotated the position of the towers so we can try to find the best views for each tower, also the best environmental conditions.

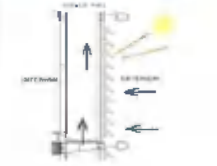
LOUVERS. All the facades have different type of louvers but all of them have the same function. Protect from the sun.

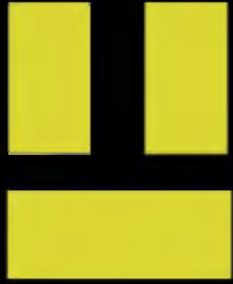


WATER LOUVERS. To try to put some new technology, we will use a new louvers that collect the water from the rain for the green areas.



DOUBLE FACADE. We have used the double facade on the towers to improve the environment on the interior of the towers.

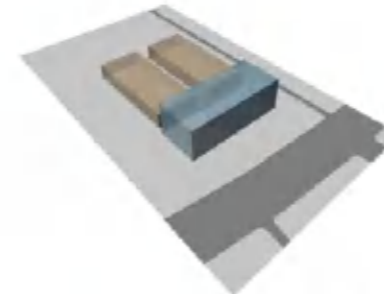




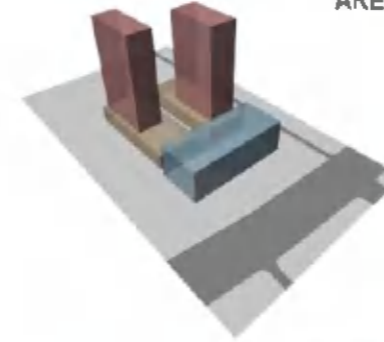
Henan Puyang Mixed Use

Location: Henan, China.
Typology: Mixed Use.
Design: Heqiao Design.
Status: Under construction.

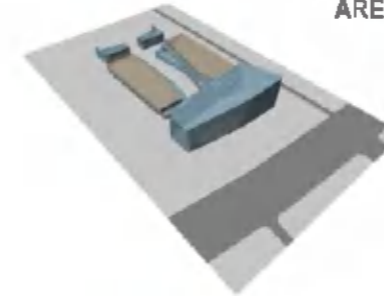
位置: 河南, 中国
项目种类: 综合体
设计师: Heqiao Design
项目状态: 比赛. 在建



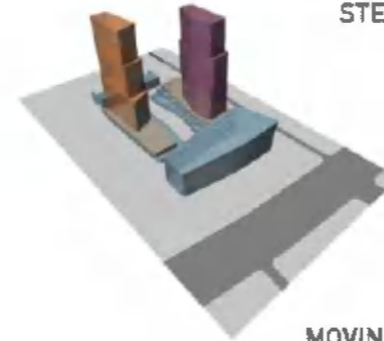
COMMERCIAL
AREA



TOWERS
AREA



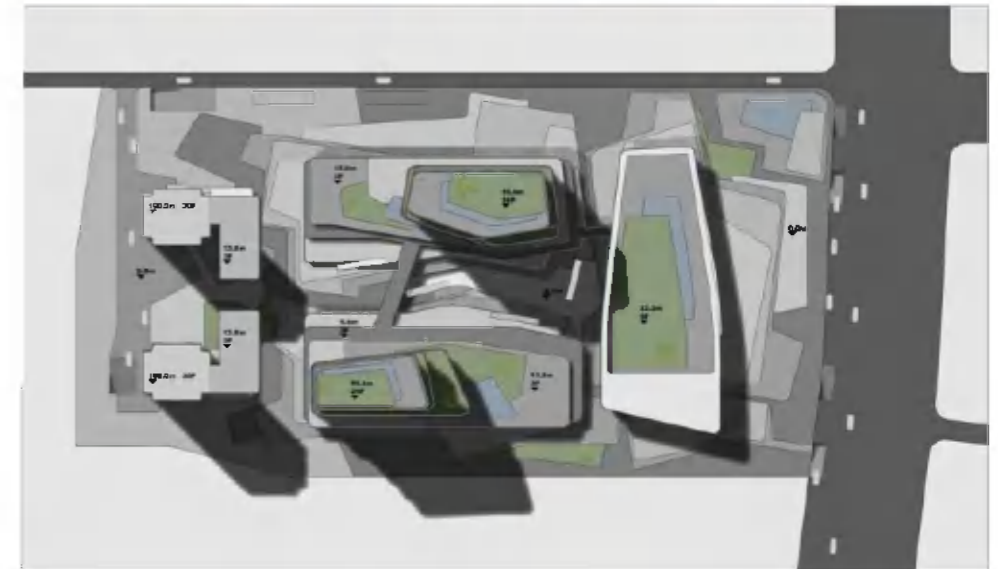
TERRACE
STEP



MOVING
TOWERS



Henan Puyang **Mixed Use**
PERSPECTIVE VIEWS





Henan Puyang Mixed Use

Location: Henan, China.
Typology: Mixed Use.
Design: Heqiao Design.
Status: Under construction.

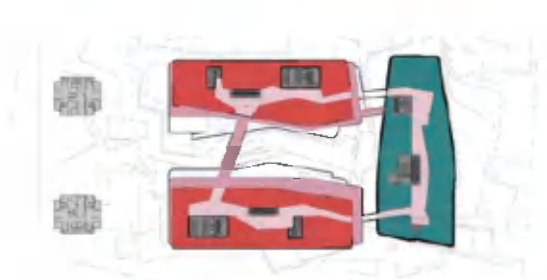
位置: 河南, 中国
项目种类: 综合体
设计师: Heqiao Design
项目状态: 比赛, 在建



1F



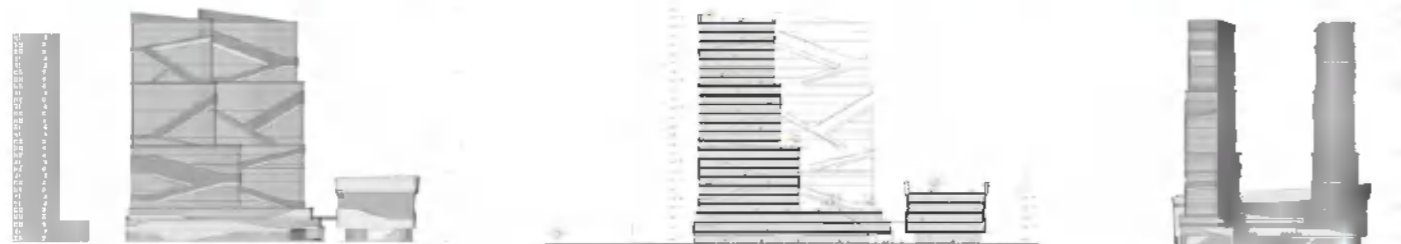
2F



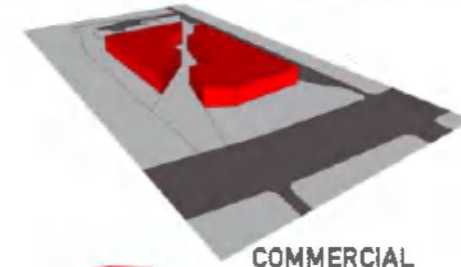
3F



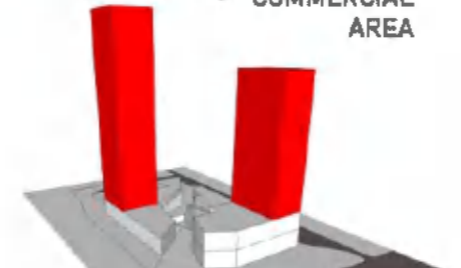
4F - 35F



THE CRACK
RETAIL ST.



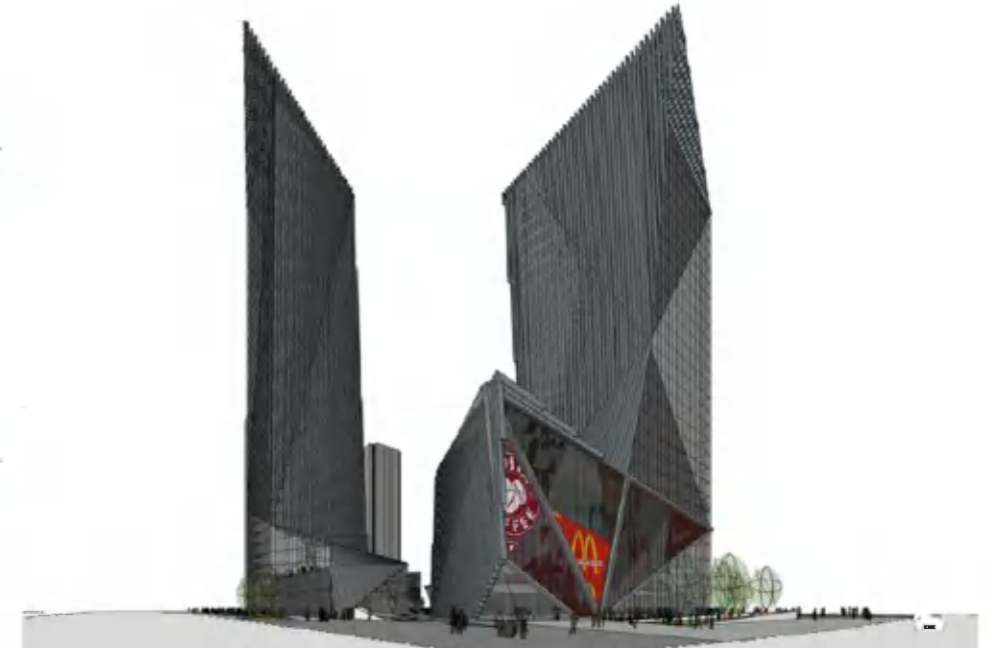
COMMERCIAL
AREA



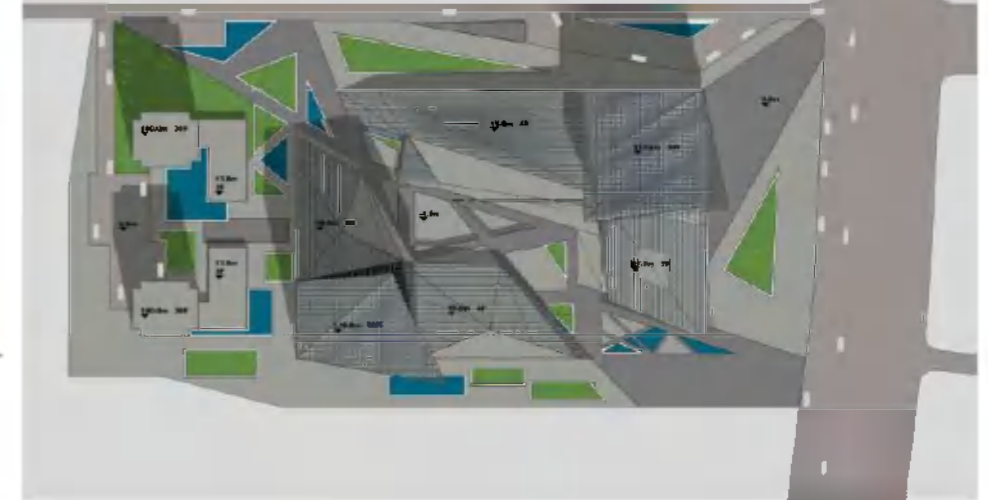
TOWERS
AREA



COMB
SHAPE



Henan Puyang Mixed Use PERSPECTIVE VIEWS





Mixed Use Xinjiang

Location: Xinjiang, China.
Typology: Mixed Use.
Design: Heqiao Design.
Status: Under construction.

位置: 新疆, 中国
项目种类: 综合体
设计师: Heqiao Design
项目状态: 比赛. 在建

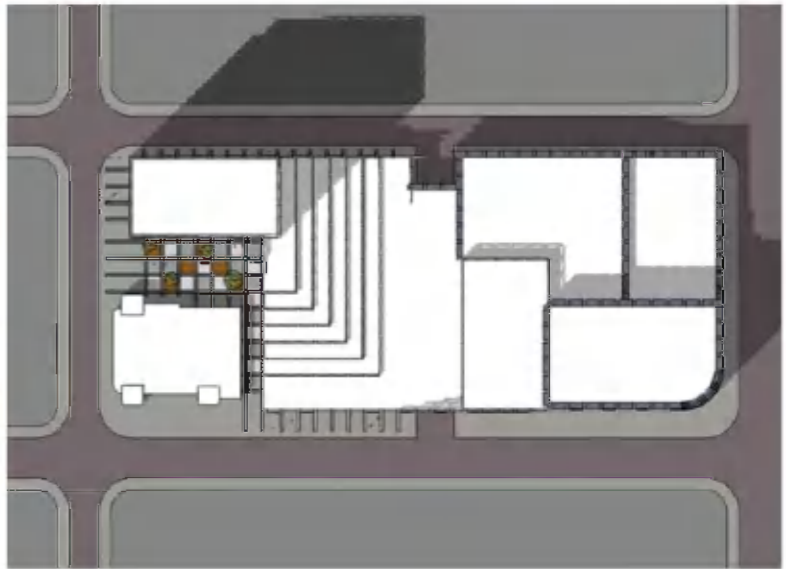
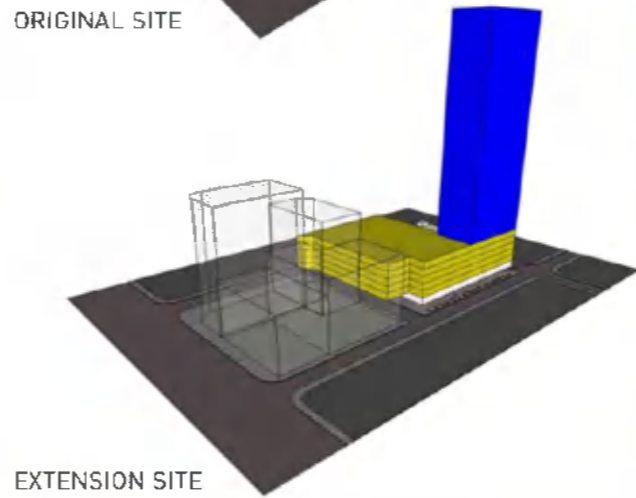
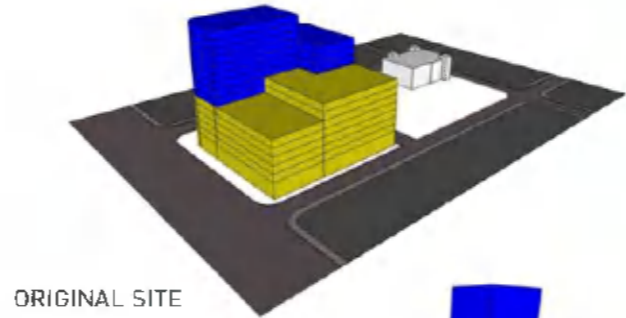




Mixed Use Changchun

Location: Xinjiang, China.
 Typology: Mixed Use.
 Design: Heqiao Design.
 Status: Under construction.

位置: 长春, 中国
 项目种类: 综合体
 设计师: Heqiao Design
 项目状态: 比赛. 在建





Zhongwei Huitai Tower

Location: Chongqing, China.
Typology: Office.
Design: CCDI
Status: Competition.

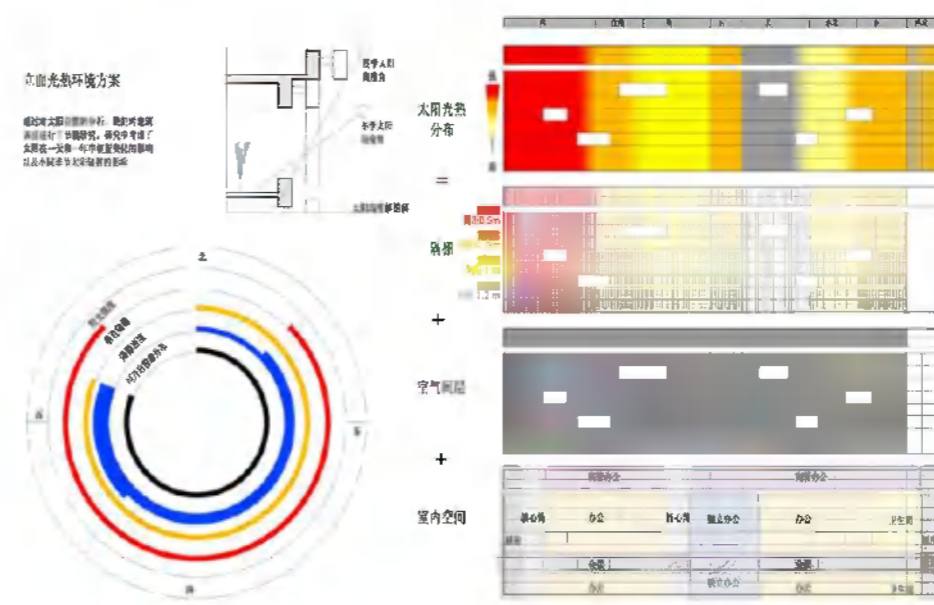
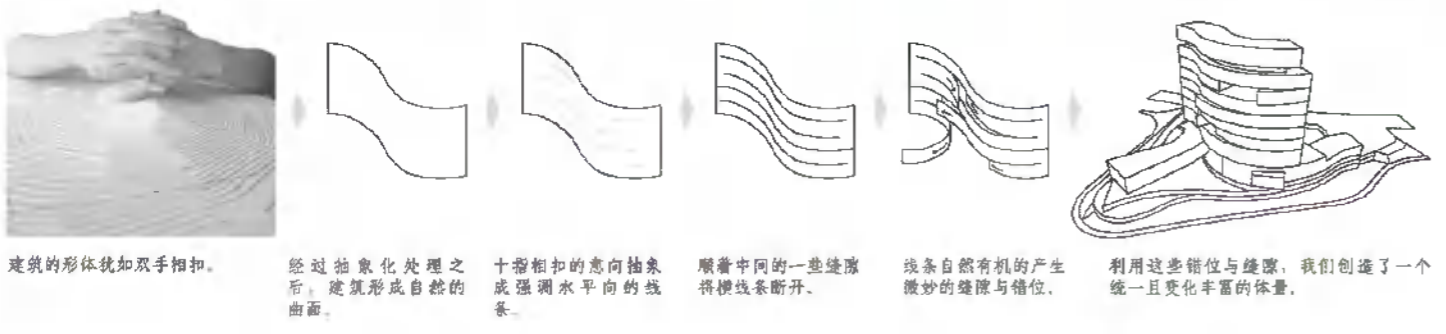
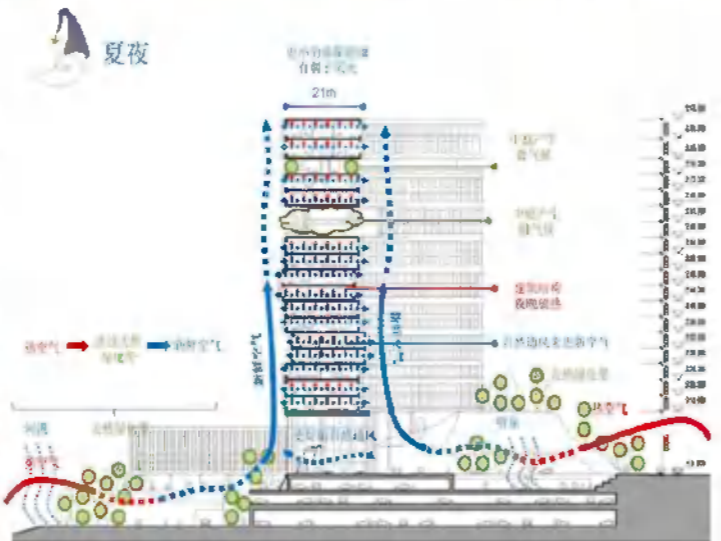
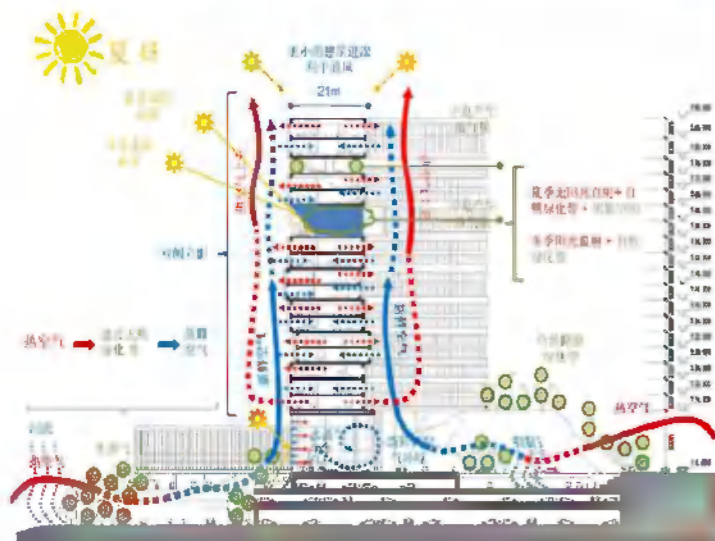
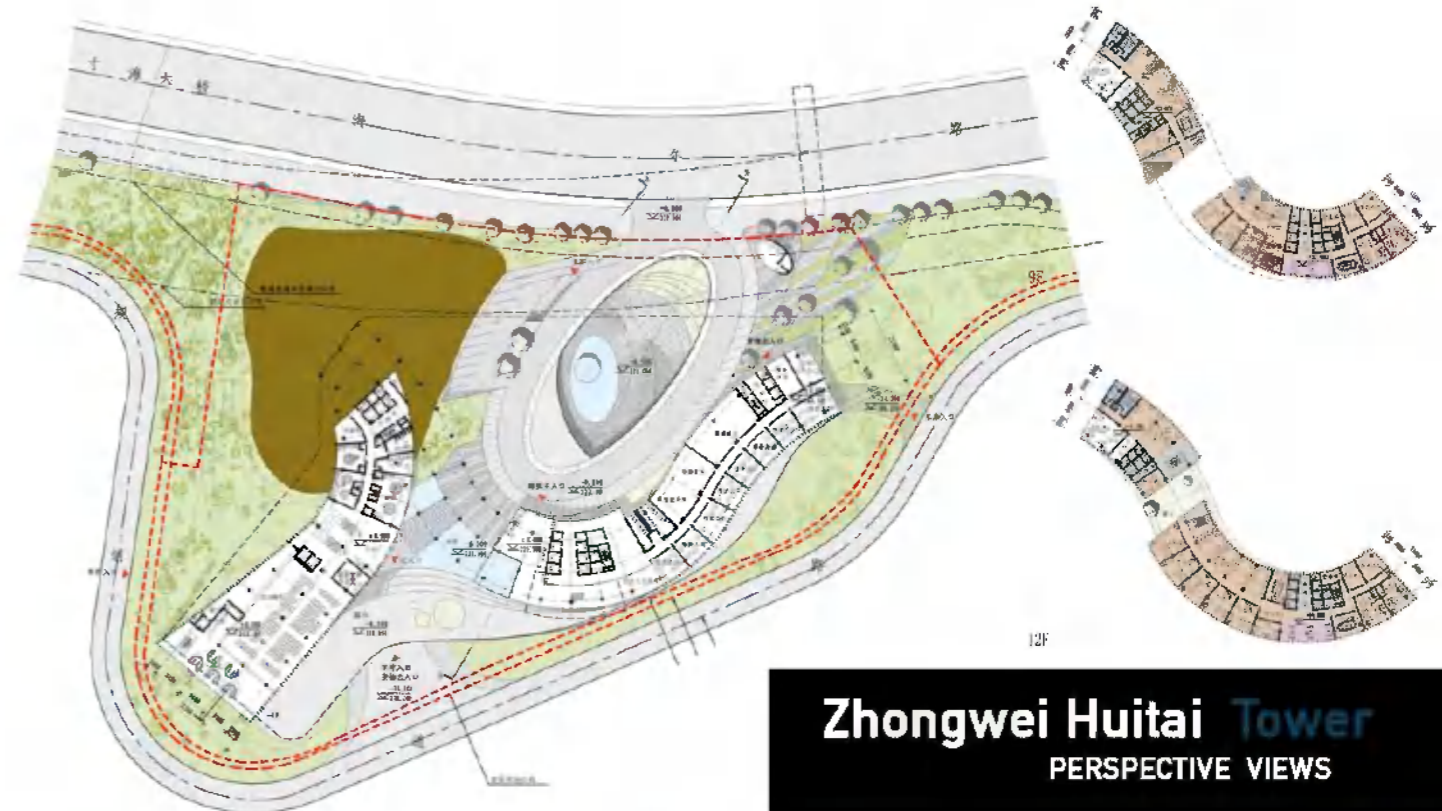
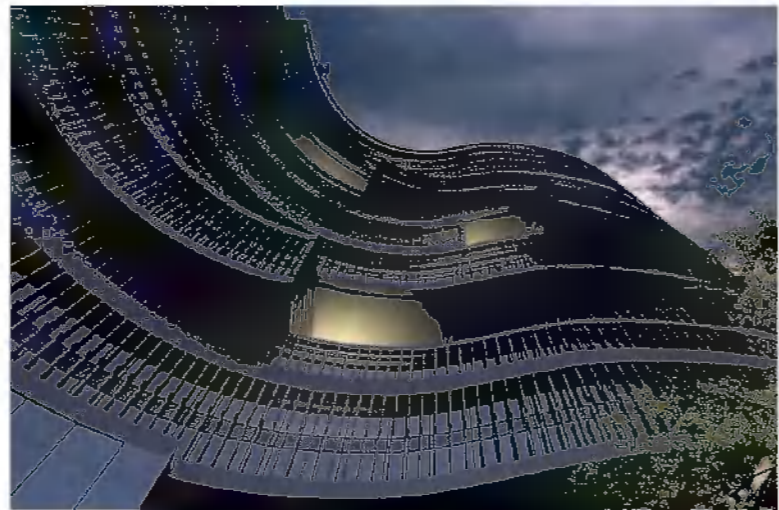
位置: 重庆, 中国.
项目种类: 机构.
设计师: CCDI
项目状态: 建筑设计大赛.



Zhongwei Huitai Tower

Location: Chongqing, China.
 Typology: Office.
 Design: CCDI
 Status: Competition.

位置: 重庆, 中国.
 项目种类: 机构.
 设计师: CCDI
 项目状态: 建筑设计大赛.



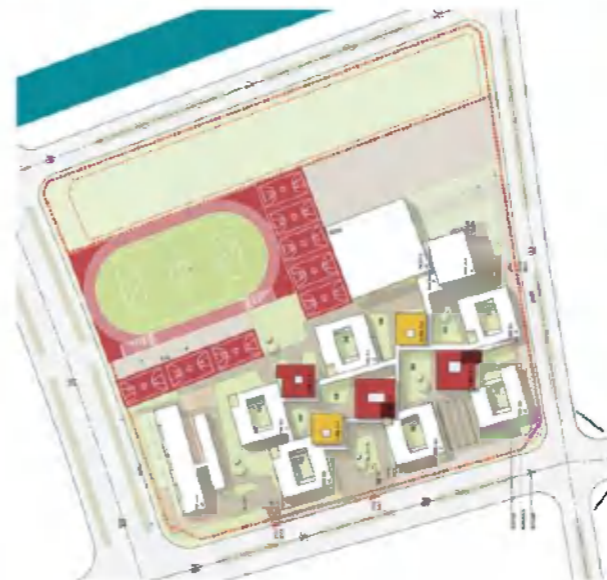
**Suzhou
Liverpool
School**

Location: Suzhou, China.
Typology: School.
Design: CCDI
Status: Under Construction.

位置: 苏州, 中国
项目种类: 教育
设计师: CCDI
项目状态: 在建



Suzhou Liverpool School
PERSPECTIVE VIEWS





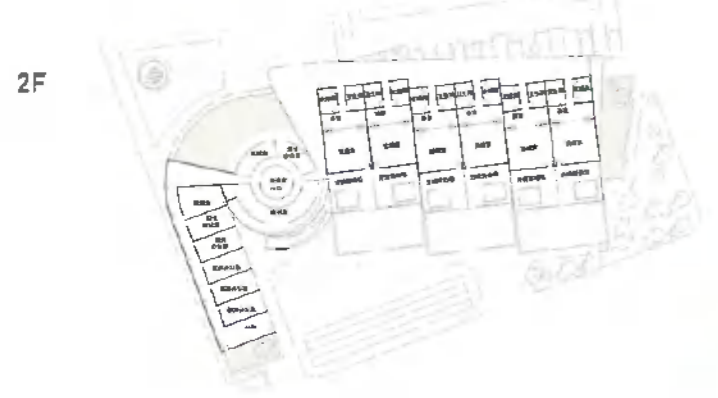
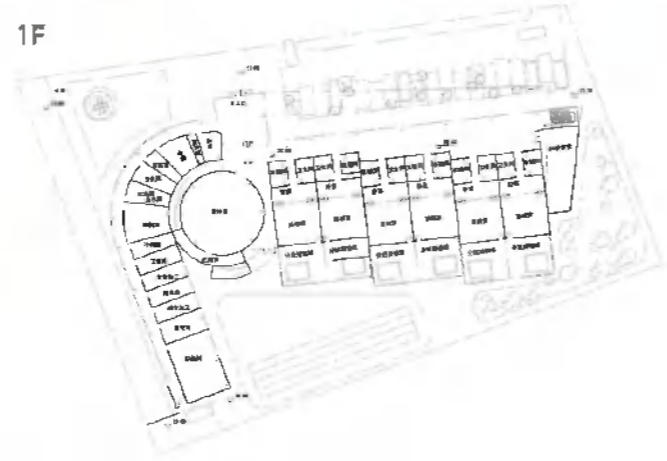
Suzhou Liverpool School

Location: Suzhou, China.
Typology: School.
Design: CCDI
Status: Under Construction.

位置: 苏州, 中国
项目种类: 教育
设计师: CCDI
项目状态: 在建



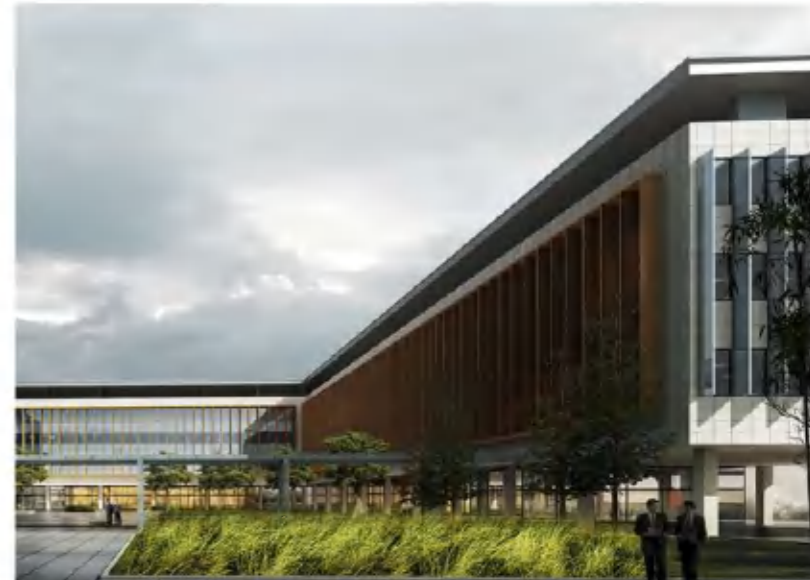
Suzhou Liverpool School
PERSPECTIVE VIEWS



 **Donghu Civic Center**

Location: Wuhan, China.
Typology: Government Office.
Design: Zephyr.
Status: Under Construction.

位置: 武汉市, 中国
项目种类: 机构
设计师: Zephyr
项目状态: 在建





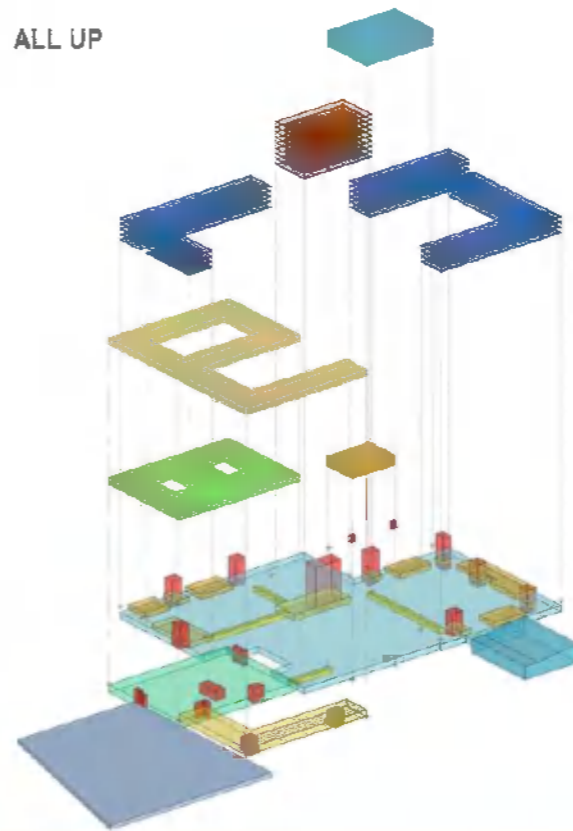
Donghu Civic Center

Location: Wuhan, China.
 Typology: Government Office.
 Design: Zephyr.
 Status: Under Construction.

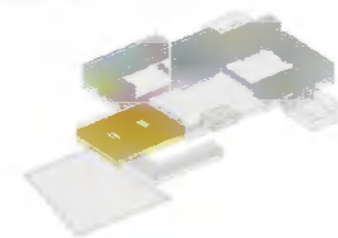
位置：武汉市，中国
 项目种类：机构
 设计师：Zephyr
 项目状态：在建



ALL UP



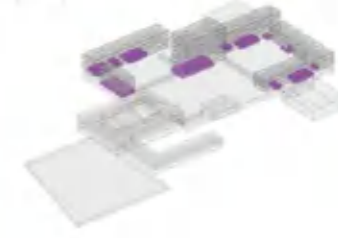
BUREAU



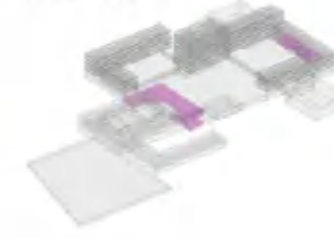
OFFICE



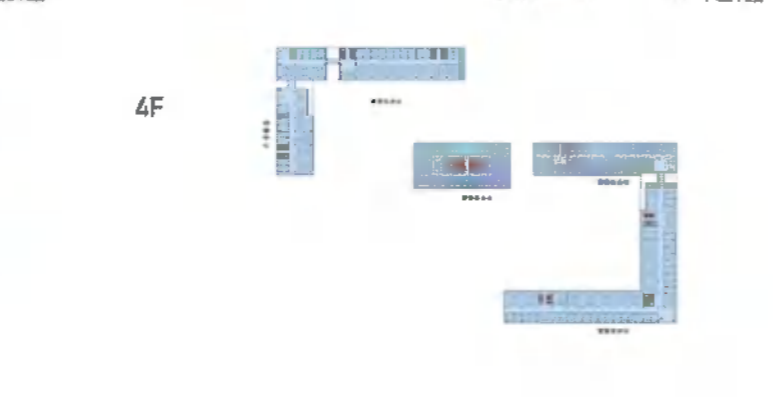
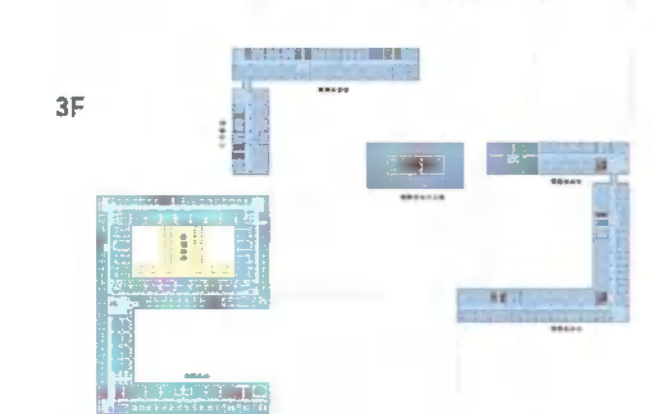
RETAIL



RESTAURANTS



Donghu Civic Center
 PERSPECTIVE VIEWS





Qingdao Intl. Complex

Location: Qingdao, China.
 Typology: Urban Planning.
 Design: Zephyr.
 Status: Under Construction.

位置: 青岛, 中国
 项目种类: 城市创
 设计师: Zephyr
 项目状态: 在建





**Balaguer
Rioja
Luis**

Spain, Madrid,
3 February 1985
+34 676 75 47 12
luisbalaguerrioja@gmail.com




**PARTNER / FOUNDER
WHITE LAB GROUP**
ART GALLERY & ARCHITECTURE
Head of a team of 6 people
Madrid - April 2016 - Now



**DESIGN DIRECTOR & BUSINESS
PHIBA ARCH**
PHILADELPHIA, BARCELONA & MADRID
Head of a team of 8 people
Madrid - February 2024 - Now

PROFESIONAL EXPERIENCE



**DESIGN DIRECTOR
LIVIT DESIGN**
Head of a team of 6 people
Madrid - June 2022 - February 2024



**DIRECTOR OF ARCHITECTURE
HEQIAO DESIGN**
Head of a team of 10 people
Beijing - July 2014 - April 2016



**SENIOR ARCHITECT
VBN GLOBAL BEIJING**
Head of a team of 6 people
Beijing - January 2014 - July 2014



**LEADER ARCHITECT
CCDI - China Construction Design
International Group**
Head of a team of 3 people
December 2012 - January 2014



**ARCHITECT
ZEPHYR US ARCHITECTS**
Beijing
September 2010 - December 2012

ACADEMIC EXPERIENCE

MASTER DEGREE OF ARCHITECTURE
POLITECHNIC SUPERIOR SCHOOL / SAN PABLO CEU UNIVERSITY
September 2003 - January 2010

EXECUTIVE MASTER - REAL ESTATE MANAGEMENT EXECUTIVE PROGRAM
IE BUSINESS SCHOOL
September 2018 - September 2019

AI - ARTIFICIAL INTELLIGENCE & ARCHITECTURE COURSE
EUROPEAN SCHOOL OF ARCHITECTURE
June 2023

COURSES & SEMINARS

Designing Cities
Pennsylvania State University

Workshop with Peter Eisenman
San Pablo CEU University

Workshop in China, Unit Housing
San Pablo CEU University

Strategic Leader Course
San Pablo CEU University

AWARDS & PUBLICATIONS

Interview at El Mundo newspaper
"China, The emperor of the architecture"

Interview at Expansion newspaper
"How to act with a chinese boss"

Balaguer Rioja Luis
CURRICULUM VITAE

LANGUAGES



SPANISH
C2 Level



ENGLISH
C2 Level




CHINESE
B2 Level




FRENCH
A2 Level


COMPUTER SKILLS




AUTOCAD
High Level




PHOTOSHOP
High Level




SKECHT UP
High Level




3D MAX
High Level




REVIT
High Level




INDESIGN
High Level




OFFICE 360
High Level



ENSCAPE
High Level



CHAT GPT
Mid Level



MIDJOURNEY
Mid Level

